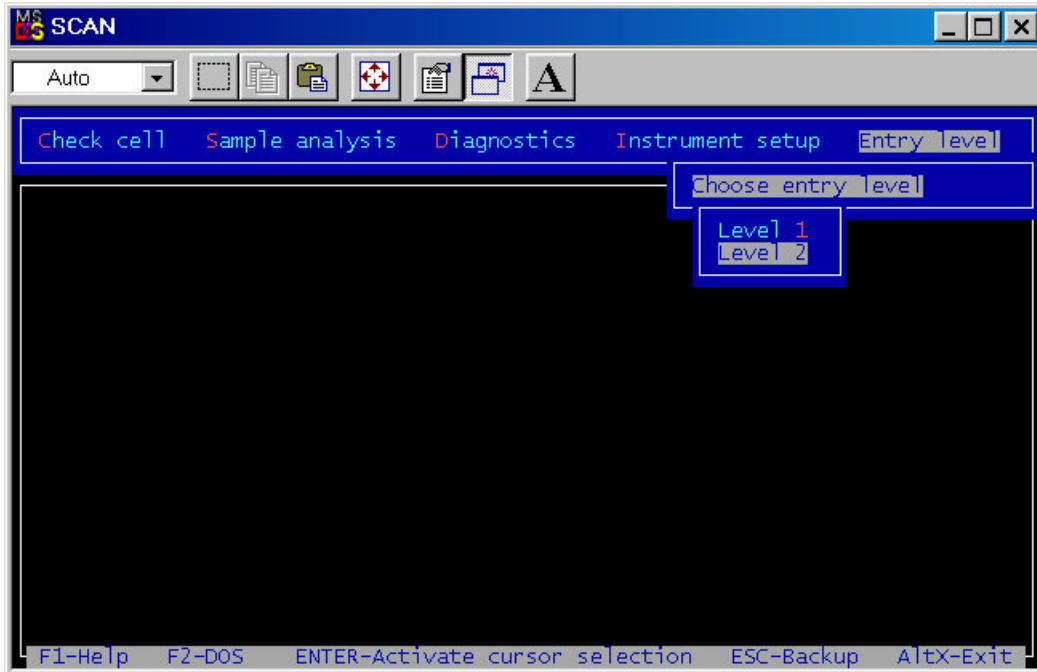
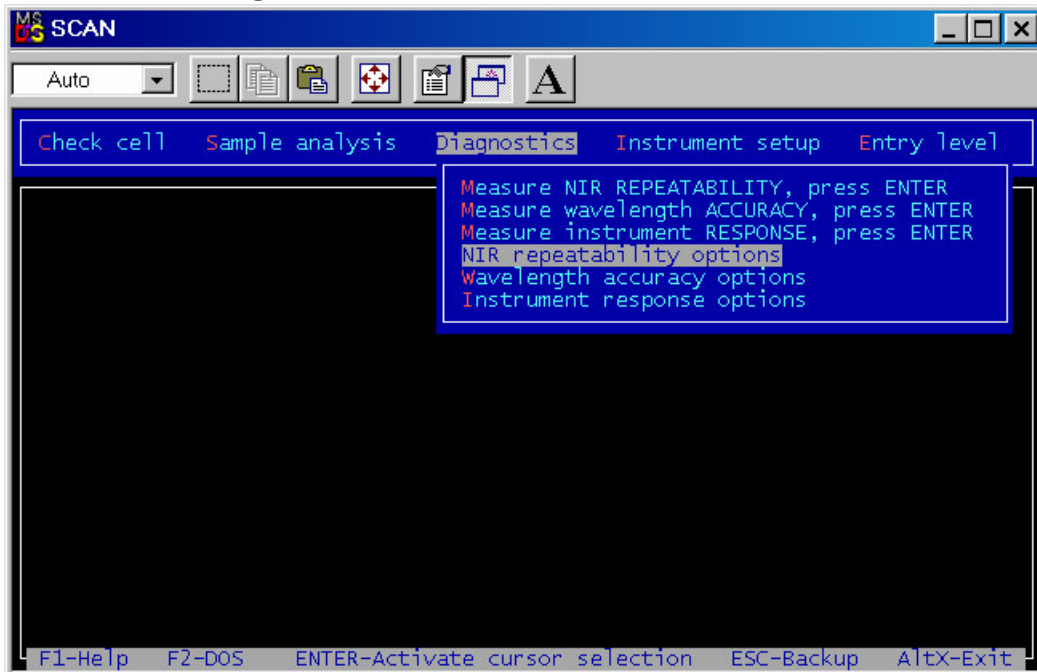


Diagnostics ISI Dos version

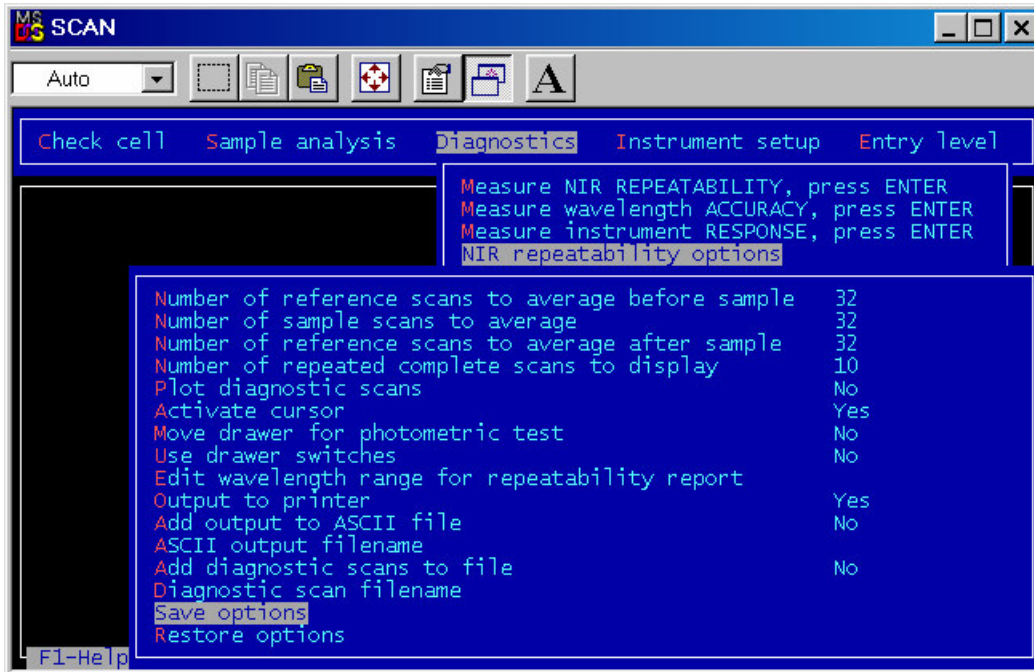
Enter in scan and then activate the EntryLevel at level 2:



Now under **Diagnostics** you will see the menu of options:



In the repeatability options set **Number of repeated complete scans to display** equal to 10 and also set **Output to printer** to YES.



Set **Output to printer** to YES under the **Instrument Response options** and the **Wavelength accuracy options**. In the **Wavelength accuracy options** **Number of repeated complete scans to display** equal to 5.

The printed output should look like the one on the next page:

NIR Max =55313

Instrument Response on 08-28-2000

Filter Number	Minimum Value	Data Point	Maximum Value	Data Point
1	2844	2	55313	143

Dark Period Values

1	862
2	864

Photometric Repeatability 16 revs 10 scans 08-28-2000

Scan	RMS	BIAS	RMS (C)
1	16	-12	10
2	20	-17	12
3	11	-3	10
4	16	10	12
5	11	-5	10
6	19	-14	12
7	34	-32	12
8	11	-3	10
9	29	-27	9
10	21	-18	11
Minimum	11	-32	9
Maximum	34	10	12
Average	20	-12	11

REP =11

Scan Wavelength Reference Peaks 08-28-2000

1	1143.83	1680.96	2166.64	2305.91
2	1143.82	1680.96	2166.64	2305.91
3	1143.82	1680.96	2166.64	2305.91
4	1143.82	1680.96	2166.64	2305.91
5	1143.82	1680.96	2166.64	2305.91

Peak	Average	Diff	S.D.
1143.63	1143.82	0.1922	0.0046
1681.27	1680.96	-0.3138	0.0011
2166.40	2166.64	0.2418	0.0015
2305.93	2305.91	-0.0208	0.0008

	Current	Suggested
K	3311.02	3311.07
Phi	0.31823	0.31821
Error	0.2204	0.2194

K=3311.02
Phi=0.31823
Nir_wave_error= 0.2204